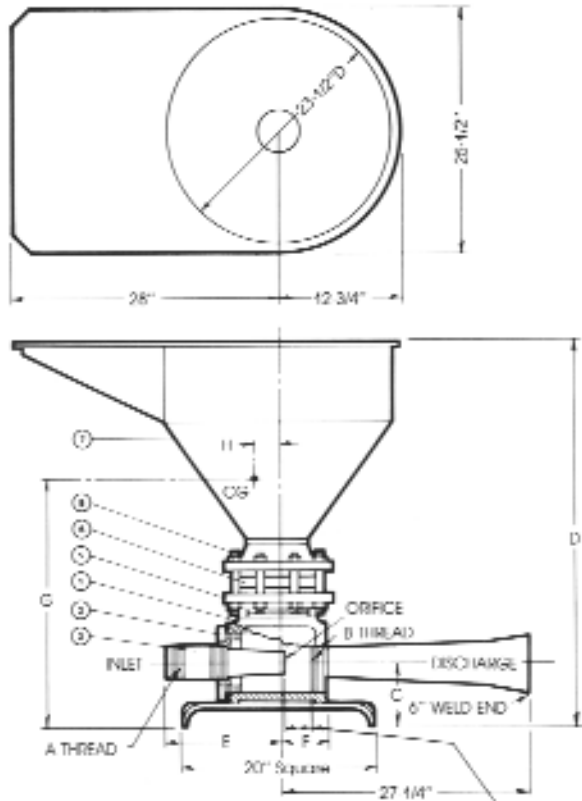


**6" MUD HOPPER
WITH OPTIONAL
VENTURI**

SECTION IV

PARTS LIST

| REF. | DESCRIPTION & MATERIALS | PART NUMBERS | |
|------|------------------------------|--------------|--------------|
| | | 4" | 6" |
| | Assembly | 0412 | 0612 |
| 1 | Tee Assembly | 0677 | 0625 |
| 2 | Bushing Malleable Iron | 5211-32161 | 5211-48241 |
| 3 | Choke Nipple Steel | 0210-112 | 0360-132 |
| 5 | Flange Steel | 12827 | 12089 |
| 6 | Butterfly Valve | 2151-1215311 | 1615-1215311 |
| 7 | Hopper Assembly Steel | 0623 | 0624 |
| 8 | Flange Stud Set Steel | 2683-004 | 2683-005 |
| | Venturi (Optional) WCB Steel | | 15476 |



**TABLE MAY BE ROTATED
360° In 45° INTERVALS**

1 1/4" - 3 1/8"
Jet Nozzle to
Venturi Gap

DIMENSIONAL DATA

| DIMENSION | SIZE | |
|-----------|----------|----------|
| | 4" | 6" |
| A | 2" NPT | 3" NPT |
| B | 4" NPT | 6" NPT |
| C | 4-7/8" | 6-1/8" |
| D | 37-3/4" | 39-5/8" |
| E | 9-3/8" | 11-9/16" |
| F | 3-13/16" | 5-1/8" |
| G | 20" | 24" |
| H | 3-1/2" | |

OPERATING DATA

| HOPPER SIZE | | 4" | 6" |
|----------------------|-------------|--------------|------------------|
| Feed Head | | 70-120 feet | 70-120 feet |
| Volume | Mud | 110-140 GPM | 1100-1400 GPM |
| | Bulk Solids | 100 lb./min. | 600 lb./min. |
| Volume w/ Venturi | Mud | --- | 1300-1650 GPM |
| | Bulk Solids | --- | 800-900 lb./min. |
| Choke Nipple Bore | | 3/4" | 2" |
| Weight | | 186 lb. | 236 lb. |
| Weight w/Venturi | | --- | 981 lb. |

OPERATION AND MAINTENANCE INFORMATION

The RETSCO Mud Hopper is designed for high-volume, low-pressure mud mixing by use of centrifugal pumps. Inlet feed pressure to the Hopper should be in the range of 70 to 120 feet of head, with a minimum amount of backpressure downstream. Backpressure exceeding 50% of the feed head will reduce the vacuum effect and mixing capabilities. A large tee at the base of the Hopper provides ample mixing area around the choke nipple, which is threaded into one side of the tee through the bushing.

With the Venturi installed downstream of the Hopper, a higher vacuum is created, even with short downstream piping,

allowing more solids-handling per minute. The 6" RETSCO Mud Hopper, with 2" jet nipple and Venturi, will normally accommodate mixing of 8 to 9 100-pound sacks of barite per minute at 70 to 120 feet of differential head. A gap of 1-1/4" - 3-1/8" between the jet nozzle and Venturi is recommended.

To install, connect the pump discharge line to the inlet connection through a swage fitting. Connect the Hopper discharge to the mud line.

At the end of each mixing period, the tee and nozzle should be flushed out with water to eliminate solids build-up and plugging.